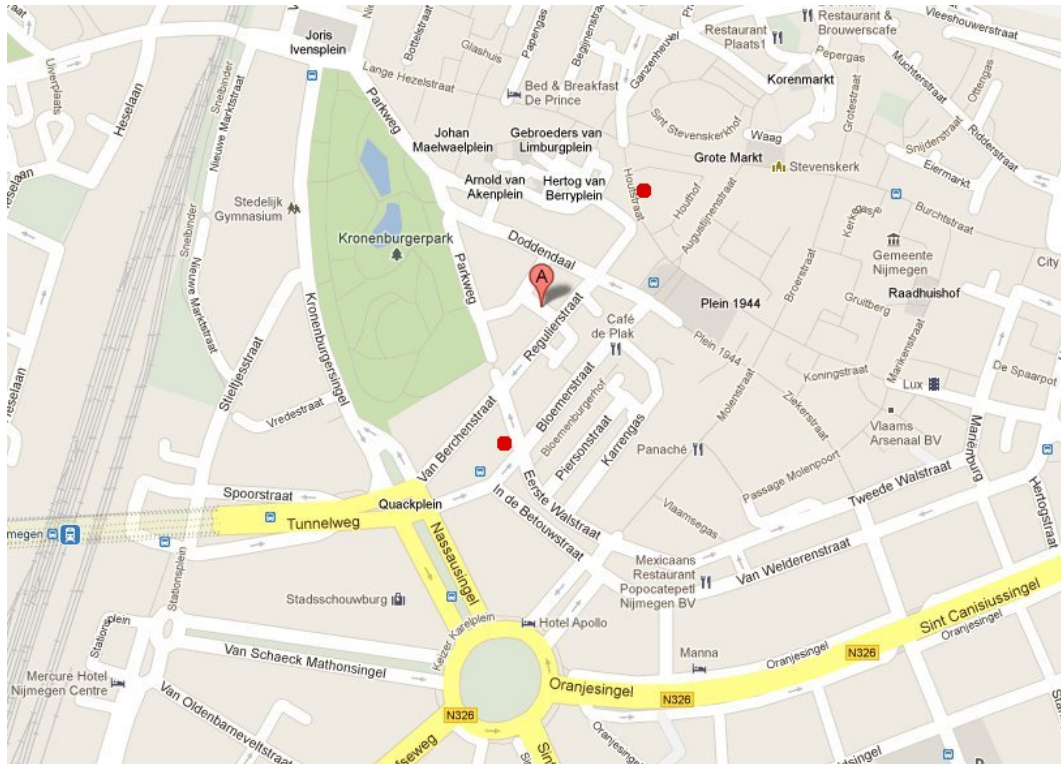


## How to get there

The game will be held at the **Activiteitscentrum Doddendaal**, Achter Valburg 2, Nijmegen, indicated by the A-sign in the diagram below:



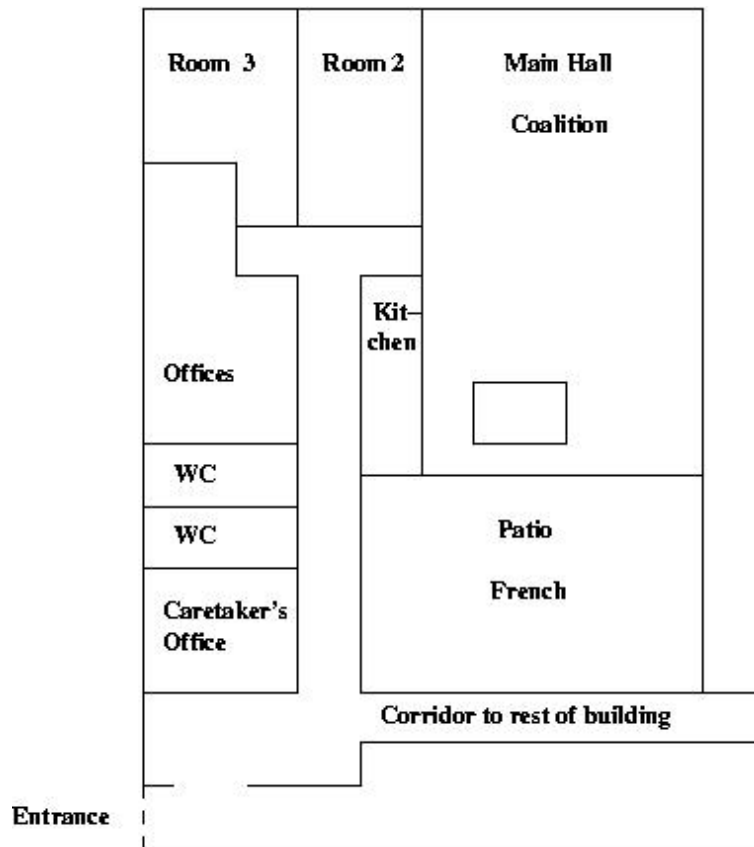
- Coming by car from the north or east  
In this case you enter Nijmegen via the N325 and cross the (historic) Waalbridge. Continue straight ahead along the N326 until you reach the central roundabout of Nijmegen, the Keizer Karel plein (notorious because traffic on the round-about has to give way). This is the round-about in the diagram.
- Coming by car from the west via the A15  
If you come from the west via the A15, follow it towards Kleef/Bemmel (and ignore directions Nijmegen), until you reach its last exit, where you leave it towards Nijmegen/Kleef via the N325. Then follow previous directions.
- Coming by car from the northwest via the A12  
Follow the A50 towards Nijmegen and then the A15 towards Kleef/Bemmel. See previous directions.

- Coming by car from the south via the A73  
At junction Wychen, follow the A326 to your right towards Nijmegen (center). Continue for about 7 km (this road is already called the Graafseweg), until you reach the Keizer Karel plein.
- Coming by car from the south-west via the A50  
Turn to the right at junction Bankhoef towards Nijmegen via the A326. Then follow previous directions.
- Coming by rail. Travel to Nijmegen CS, shown in the left of the diagram, and then walk to the Activiteitencentrum. It is only a 5 minutes walk.

There are several options to park your car. There are a number of parking places available around the centre of Nijmegen. When you enter the centre, there are signs that indicate the nearest available ones and their current capacity. As the game starts early, it should not be that difficult to find a place. It may be that the parking place at the Nassaulaan (in the centre of the diagram) still has space available. However, check the closing time of the parking place with the time that you intend to leave. Some will already close at 19.00.

## Inside the venue

The layout of the venue is roughly as depicted in the following figure:



Either Room 2 or Room 3 will be used as the umpire room with the Master map. In the kitchen, coffee, tea, soft drinks, some alcoholic drinks and food can be obtained. For the beverages, the venue is charging us a fixed price (€0,50 per cup of tea and €0,75 per cup of coffee). The pricing of the food will be decided by our volunteer kitchen help.

The patio is intended for the French teams while the main hall is intended for the coalition forces. The coalition teams should locate to the tables to the back and side of the room.

The space in the main hall in front of the kitchen and around the billard table is *neutral* territory (otherwise it would be impossible to get yourself some refreshments). Moreover this also provides some ground for encounters between French and Coalition diplomats.

## **Pregame gathering on the evening before**

On the evening before the game, we will try to organise a pregame gathering for the participants that already arrive the day before and the local game association members of Casus Belli in Café Samson, Houtstraat 4.

In the above diagram, locate plein 1944 in the centre of the above diagram. This is the central busstation in the centre (and also quite close to the game venue). Then take the northwest exit (towards the upper dot in the diagram), which is a pedestrian only road. This is the Houtstraat. Café Samson is then immediately at your right hand side.

## **Social gathering on the Saturday evening**

After the game we will gather in Café Shamrock (an Irish pub, shown in the diagram by the dot below the game venue) for an after game drink.

## **Casus Belli on Sunday afternoon**

If you are still in the vicinity of Nijmegen on the Sunday after the game and are interested in more games to play, you are of course welcome to participate in the Sunday's meeting of the local game association Casus Belli. This meeting is located in Café de Verdieping, Platenmakersstraat 3, Nijmegen.